

ELEMENTO BARRIERA ACUSTICA FONOASSORBENTE  
 LATERALE H.272X225X155  
 2° SOLUZIONE MIX COLORI

PIASTRA FONOASSORBENTE  
 IN CLS DI ARGILLA ESPANSA LECA  
 "FONOLECA QUADRO" DaL 18 dB  
 CLASSE A5 DL $\alpha$  18 dB  
 DLR 47 dB

COLORE MIX  
 (40-52-50-54)

COLORE 20

COLORE 51

COLORE 30

COLORE 30

PROSPETTO

224.5

224.5

224.5

155

PROSPETTO LATERALE

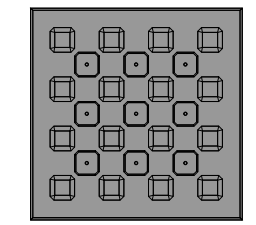
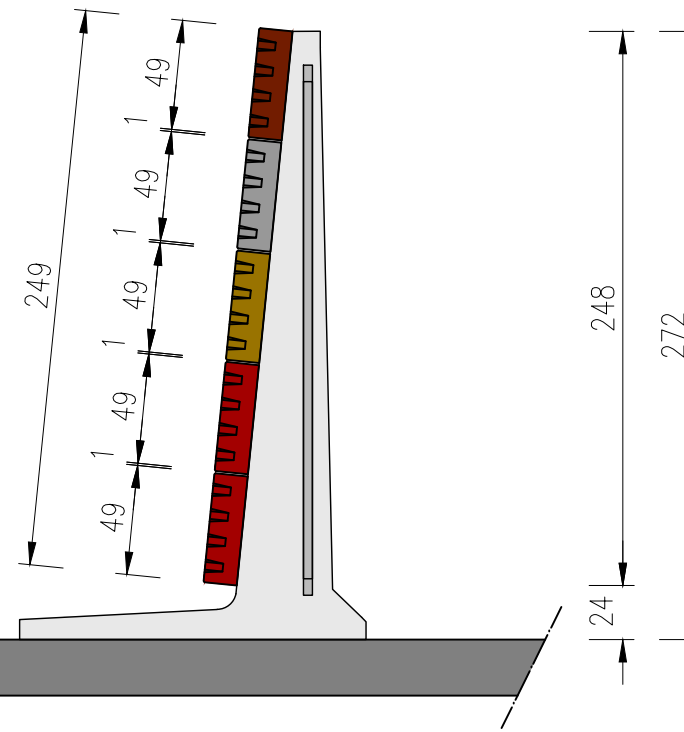
155

PIANTA

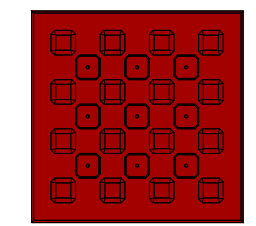
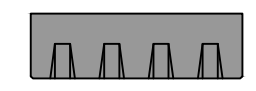
224.5

224.5

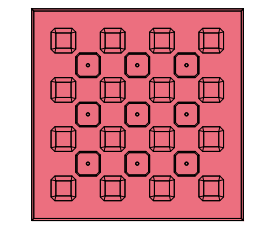
224.5



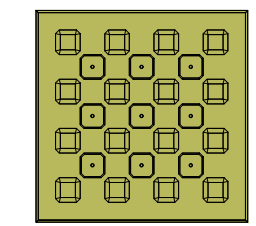
COLORE 20  
 GRIGIO  
 CEMENTO



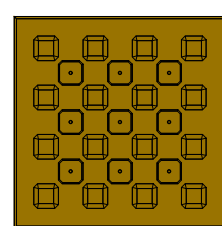
COLORE 30  
 ROSSO  
 MATTONE



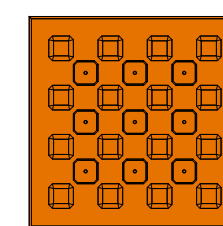
COLORE 40  
 ROSSO  
 VENEZIA



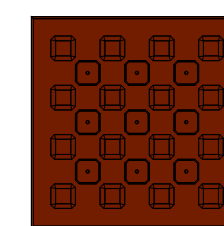
COLORE 50  
 GIALLO



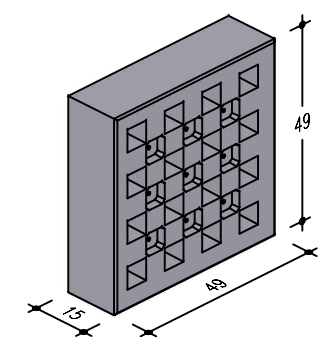
COLORE 51  
 GIALLO  
 FIRENZE



COLORE 52  
 ARANCIO



COLORE 54  
 BASALTO



	EDIL Leca S.p.A. - Via Pontebbana, 5 - 33098 Valvasone (PN) ITALY Proprietà riservata a termine di legge. E' pertanto vietato copiare, riprodurre o mostrare a terzi questo disegno senza la nostra autorizzazione scritta.		2
	Barriera Ac. Mobile con Fonoleca Q. - 2° Soluzione Laterale H.272x225x155 HYDROGEO - Ancona		
Scala	Data 16.07.2015	App.	Nome File Div.H.272x225 F.Q.
Percorso File: M:\Sc. Cl.\DIV. INFR.\ANNO 2015\FONOLECA Q.\ORDINE 29 - 2015 07 13			Disegn. Enrico